

QD8E_3U Series

0.25W - Single Output DC-DC Converter - Fixed Input - Isolated & Unregulated

DC-DC Converter

0.25 Watt

- ⊕ 8 Pin DIL package
- ⊕ 3KVDC Isolation
- ⊕ Operation temperature range: -40°C ~ +85°C
- ⊕ Low ripple and noise
- ⊕ Efficiency up to 77%
- ⊕ EMI complies with EN55032 Class B
- ⊕ Industry Standard Pinout

The QD8E_3U series is a family of cost effective 0.25W single output DC-DC converters. These converters achieve low-cost and ultra-miniature DIP8 pin size. Devices are encapsulated using flame retardant resin.

They are specially designed for applications where an isolated voltage is required in a distributed power supply system. Such as: digit circuit condition; normal low-frequency artificial circuit condition; relay drive circuit and data switching circuit condition, etc.



Common specifications

Cooling:	Free air convection
Operation temperature range:	-40°C~+85°C
Storage temperature range:	-40°C ~+125°C
Casing temperature:	100°C MAX
Soldering temperature:	260°C MAX, 1.5mm from case for 10 sec.
Storage humidity range:	< 95%
Case material:	Plastic [UL94-V0]
Pin material:	>1,121,000 hours
Safety standard:	IEC 60950-1
MTBF (MIL-HDFK-217F@25°C):	ø0.5mm Brass solder-coated
Weight:	1.8g

Output specifications

Item	Test condition	Min	Typ	Max	Units
Output voltage accuracy	See tolerance envelope graph				
Line regulation	For Vin change of ±1%			±1.2	%
Load regulation	20% to 100% load • 3.3V output • others		20 10		% %
Ripple & Noise*	20MHz Bandwidth		100		mVpk-pk
Temperature drift	100% full load		±0.02		%/°C
Switching frequency	variable		80		KHz

* Ripple and noise are measured by "parallel cable" method, please see DC-DC Converter Application Notes for specific operation.

Input specifications

Item	Test condition	Min	Typ	Max	Units
Voltage range			10		%
Reflected ripple current*			20		mApk-pk
Surge voltage	• 3.3VDC input • 5VDC input • 12VDC input • 15VDC input • 24VDC input			5 7 15 18 28	VDC VDC VDC VDC VDC
Input filter	Filter capacitor				

* Measured with a simulated source inductance of 12µH and a source capacitor Cin (47µF, ESR<1.0Ω at 100KHz).

EMC specifications

Item	Test condition	Class
CE*	EN55032	CLASS B
RE	EN55032	CLASS B
ESD	IEC/EN61000-4-2	perf. Criteria A
RS	IEC/EN61000-4-3	perf. Criteria A
EFT**	IEC/EN61000-4-4	perf. Criteria A
Surge**	IEC/EN61000-4-5	perf. Criteria A
CS	IEC/EN61000-4-6	perf. Criteria A
PFMF	IEC/EN61000-4-8	perf. Criteria A

* Input filter components are required to help meet conducted emission class B, which application refer to the EMI filter section.

** An external filter is required if the module has to meet IEC61000-4-4 and IEC61000-4-5.

Isolation specifications

Item	Test condition	Min	Typ	Max	Units
Isolation voltage	Tested for 1 minute and 1mA max	3000			VDC
Isolation resistance	Test at 500VDC	1000			MΩ
Isolation capacitance	Input-output, 100KHz/0.1V		60		pF

Example SIP4 Case:

QD8E_05053U
 Q= 0,25 Watt; D8= DIP8; E= Pinning; 05= 5 Vin; 05= 5Vout;
 S= Single Output; 3= 3kVDC Isolation; U= Unregulated Output

Note:

1. Operation under minimum load will not damage the converter; However, they may not meet all specification listed, and that will reduce the life of product.
2. All specifications measured at Ta=25°C, humidity<75%, nominal input voltage and rated output load unless otherwise specified.
3. Only typical models listed, other models may be different, please contact our technical person for more details.
4. In this datasheet, all the test methods of indications are based on corporate standards.

QD8E_3U Series

0.25W - Single Output DC-DC Converter - Fixed Input - Isolated & Unregulated

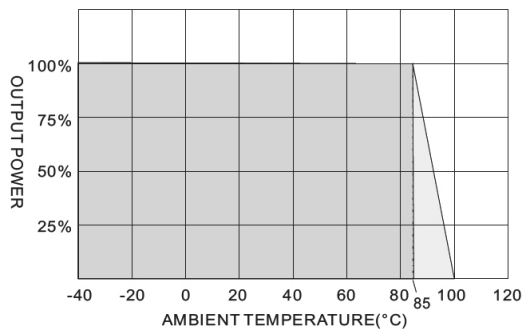
Part Number	Input Voltage [V]	Input current [mA, max]	Output Voltage [VDC]	Output current [mA, max]	Efficiency [%, typ]	Capacitive load [μ F max]
QD8E_0303S3U	3.3	124	3.3	75.7	61	100
QD8E_0305S3U	3.3	118	5	50	64	100
QD8E_0307S3U	3.3	118	7.2	34.7	64	100
QD8E_0309S3U	3.3	118	9	27.7	64	100
QD8E_0312S3U	3.3	120	12	20.8	63	100
QD8E_0315S3U	3.3	118	15	16.6	64	100
QD8E_0318S3U	3.3	115	18	13.8	66	100
QD8E_0324S3U	3.3	115	24	10.4	66	100
QD8E_0503S3U	5	83	3.3	75.7	60	100
QD8E_0505S3U	5	72	5	50	69	100
QD8E_0507S3U	5	71	7.2	34.7	70	100
QD8E_0509S3U	5	71	9	27.7	70	100
QD8E_0512S3U	5	74	12	20.8	68	100
QD8E_0515S3U	5	74	15	16.6	68	100
QD8E_0518S3U	5	68	18	13.8	73	100
QD8E_0524S3U	5	72	24	10.4	69	100
QD8E_1203S3U	12	31	3.3	75.7	67	100
QD8E_1205S3U	12	32	5	50	65	100
QD8E_1207S3U	12	32	7.2	34.7	65	100
QD8E_1209S3U	12	35	9	27.7	60	100
QD8E_1212S3U	12	31	12	20.8	68	100
QD8E_1215S3U	12	37	15	16.6	57	100
QD8E_1218S3U	12	38	18	13.8	55	100
QD8E_1224S3U	12	41	24	10.4	51	100
QD8E_1503S3U	15	26	3.3	75.7	63	100
QD8E_1505S3U	15	26	5	50	63	100
QD8E_1507S3U	15	28	7.2	34.7	60	100
QD8E_1509S3U	15	28	9	27.7	60	100
QD8E_1512S3U	15	28	12	20.8	60	100
QD8E_1515S3U	15	28	15	16.6	59	100
QD8E_1518S3U	15	29	18	13.8	57	100
QD8E_1524S3U	15	29	24	10.4	57	100
QD8E_2403S3U	24	18	3.3	75.7	58	100
QD8E_2405S3U	24	17.95	5	50	58	100
QD8E_2407S3U	24	18	7.2	34.7	59	100
QD8E_2409S3U	24	18	9	27.7	58	100
QD8E_2412S3U	24	19	12	20.8	55	100
QD8E_2415S3U	24	18	15	16.6	59	100
QD8E_2418S3U	24	20	18	13.8	53	100
QD8E_2424S3U	24	19	24	10.4	55	100

QD8E_3U Series

0.25W - Single Output DC-DC Converter - Fixed Input - Isolated & Unregulated

Typical characteristics

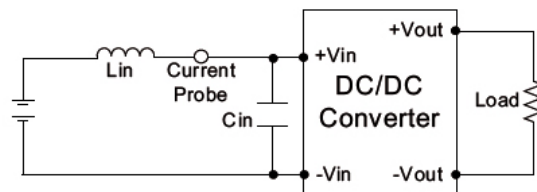
Derating Curve



Test configurations

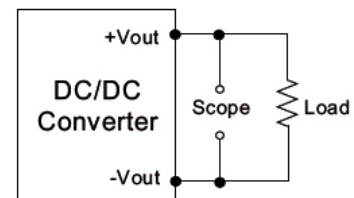
Input reflected ripple current test step

Input reflected ripple current is measured through a source inductor L_{in} (12 μ H) and a source capacitor C_{in} (47 μ F, ESR<1.0 Ω at 100KHz) at nominal input and full load.



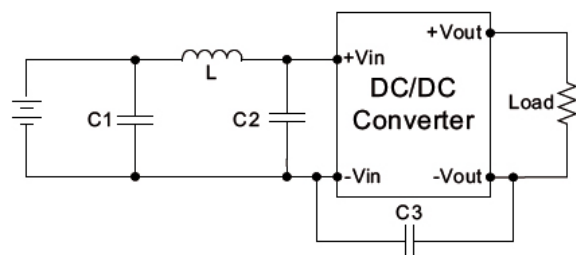
Output ripple & noise measurement test

The scope measurement bandwidth is 20MHz.



EMI filter

Input filter components (C_1 , L , C_2 , C_3) are used to help meet conducted emissions requirement for the module. These components should be mounted as close as possible to the module; and all leads should be minimized to decrease radiated noise.

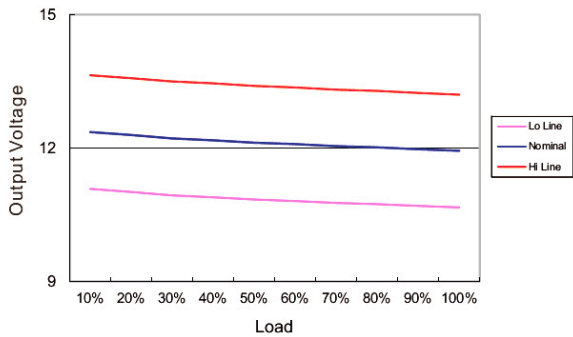


	C1	L	C2	C3
QD8E_03xx_3U	1210, 2.2 μ F/100V	18 μ H		
QD8E_05xx_3U	1210, 2.2 μ F/100V	18 μ H		
QD8E_12xx_3U	1210, 2.2 μ F/100V	18 μ H		
QD8E_15xx_3U	1210, 2.2 μ F/100V	18 μ H		
QD8E_24xx_3U	1210, 2.2 μ F/100V	18 μ H	1210, 2.2 μ F/100V	1206, 470pF/2KV
QD8E_48xx_3U	Electrolytic capacitor, 10 μ F/100V	18 μ H	1210, 2.2 μ F/100V	1206, 470pF/2KV

Loading vs. output voltage

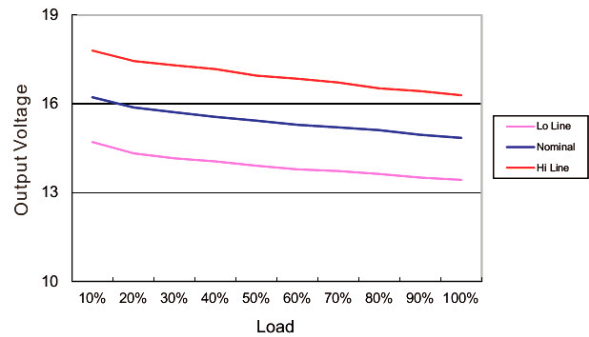
3.3 models

LOADING VS OUTPUT VOLTAGE



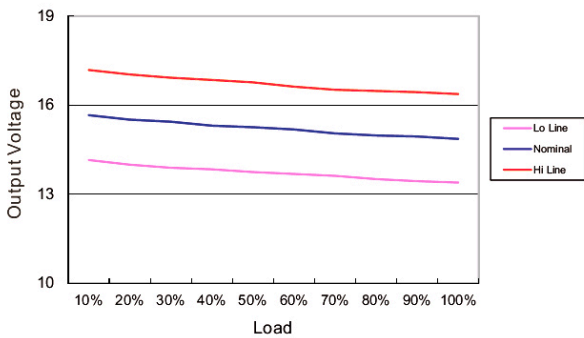
5 models

LOADING VS OUTPUT VOLTAGE



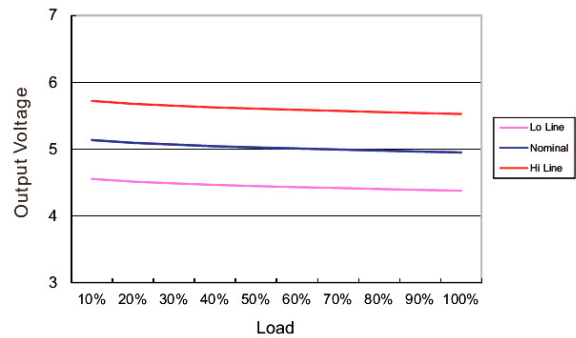
12 models

LOADING VS OUTPUT VOLTAGE



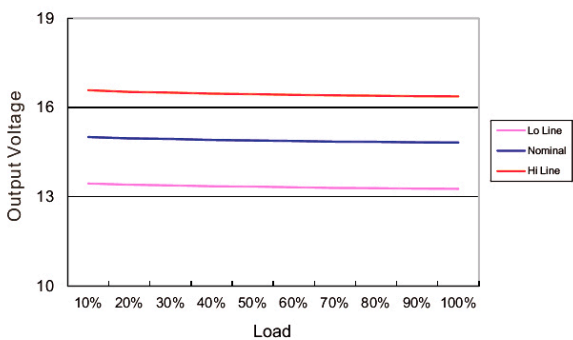
15 models

LOADING VS OUTPUT VOLTAGE



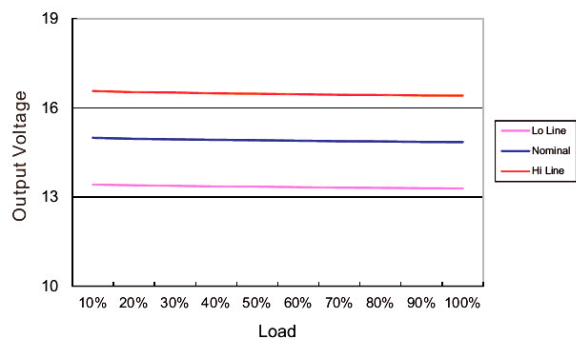
24 models

LOADING VS OUTPUT VOLTAGE



48 models

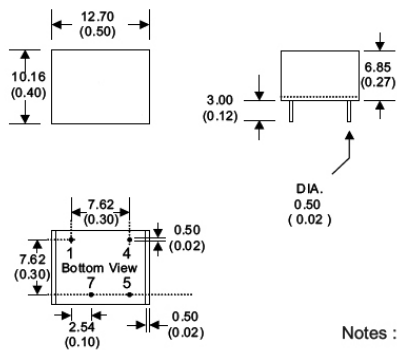
LOADING VS OUTPUT VOLTAGE



QD8E_3U Series

0.25W - Single Output DC-DC Converter - Fixed Input - Isolated & Unregulated

Mechanical dimensions



8 Pin DIL Package

- Notes : All dimensions are typical in millimeters (inches).
1. Pin diameter: 0.5 ± 0.05 (0.02 ± 0.002)
 2. Pin pitch and length tolerance: ± 0.35 (± 0.014)
 3. Case Tolerance: ± 0.5 (± 0.02)

PIN CONNECTIONS	
PIN NUMBER	SINGLE
1	-V Input
4	+V Input
5	+V Output
7	-V Output

(The Pin Connection of high isolation one is the same with normal one.)