



QT8B1_1.5UP series

0.25W - Single Output DC-DC Converter - Fixed Input - Isolated & Unregulated

DC-DC Converter 0.25 Watt

- + 14PIN SMD package
- + No load input current as low as 5 mA
- + Continuous short circuit protection
- + High efficiency up to 85%
- + Unregulated output types
- + 1.5kVDC isolation
- + Operating temperature: 40°C to +105°C
- + Industry standard pinout
- + Design refer to IEC62368, UL62368, EN62368

The QT8B1_1.5UP series is specially designed for applications where an isolated voltage is required in a distributed power supply system.

These products apply to:

- 1) Where the voltage of the input power supply is fixed (Voltage variation $\leq \pm 10\%$)
- 2) Where isolation is necessary between input and output (Isolation voltage $\leq 1500\text{VDC}$)
- 3) Where the regulation of the output voltage and the output ripple noise are not demanding.

Such as: pure digital circuits, low frequency analog circuits, and relay-driven circuits.



Common specifications	
Short circuit protection*:	Continuous
Temperature rise at full load:	20°C TYP
Operation temperature range:	-40°C~+105°C
Storage temperature range:	-55°C ~+125°C
Storage humidity range:	< 95% (Non Condensing)
MTBF:	>3,500,000 hours
Case material:	DAP
Cooling:	Free air convection
Dimensions:	12.7x7.6x6.25 mm
Weight:	1.2g Typ.

Input specifications						
Item	Test condition	Min	Typ	Max	Units	
Voltage range	• Vo,lo Nom@Vin:3.3V,5V		±10		%	
	• Vo,lo Nom Vin:9V,12V,15V		±20		%	
Input filter	Capacitor filter					

Isolation specifications						
Item	Test condition	Min	Typ	Max	Units	
Isolation voltage	Tested for 1 minute and 1mA max	1500			VDC	
Isolation resistance	Test at 500VDC	1000			MΩ	
Isolation capacitance	Input-output, 100KHz/0.1V		20		pF	

Example SIP4 Case:
QT8B1_0505S1.5UP
 Q = 0,25 Watt; T8 = SMT8; A1 = Pinning; 05 = 5Vin; 05 = 5Vout;
 S = Single Output; 1.5 = 1.5kVDC Isolation; U = Unregulated Output
 P = Short circuit protection

Output specifications					
Item	Test condition	Min	Typ	Max	Units
Voltage tolerance	100% full load			±5	%
Line Regulation	For 1.0% of Vin		1.2		%
Load regulation	• 3.3V (10% To 100% F.L)		15	20	%
	• 5V (10% To 100% F.L)		10	15	%
	• 9V (10% To 100% F.L)		8	10	%
	• 12V (10% To 100% F.L)		7	10	%
	• 15V (10% To 100% F.L)		6	10	%
Ripple & Noise	BW=DC To 20MHz@ Vo:3.3V,5V,9V,12V,15V		30	75	mVp-p
		Switching Frequency	Full load,nominal input • 3.3V, 5V Vin • other Vin		215/370 250

* Test ripple and noise by "parallel cable" method. See detailed operation instructions at application notes.

EMC specifications		
EMI	CE	CISPR32/EN55032 CLASS B (see Fig. 1 for recommended circuit)
EMI	RE	CISPR32/EN55032 CLASS B (see Fig. 1 for recommended circuit)
EMS	ESD	IEC/EN61000-4-2 Air ±8kV , Contact ±4kV perf. Criteria B

Note:

1. Operation under minimum load will not damage the converter; However, they may not meet all specifications.
2. Max. Capacitive Load is tested at nominal input voltage and full load.
3. Unless otherwise noted, All specifications are measured at Ta = 25°C, humidity <75%, nominal input voltage and rated output load.
4. In this datasheet, all test methods are based on our corporate standards.
5. All characteristics are for listed models, and non-standard models may perform differently. Please contact our technical support for more detail.
6. Please contact our technical support for any specific requirement.
7. Specifications of this product are subject to changes without prior notice.

QT8B1_1.5UP series

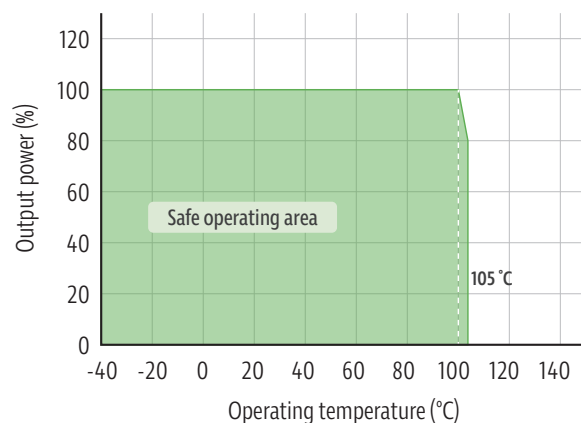
0.25W - Single Output DC-DC Converter - Fixed Input - Isolated & Unregulated

Product Selection Guide

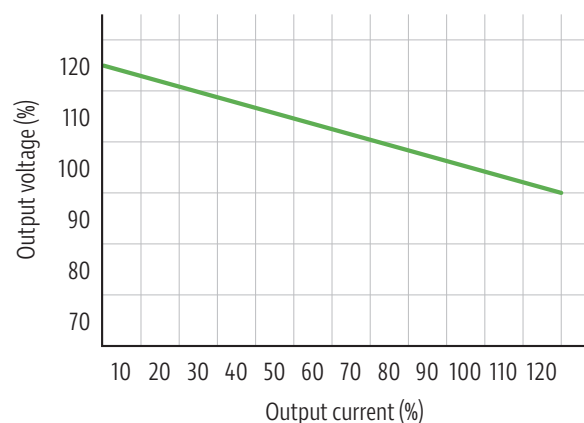
Part Number	Input Voltage [VDC]	Output Voltage [VDC]	Output Current [mA, max/min]	Max. capacitive load [μ F]	Efficiency [%, typ.]
QT8B1_0303S1.5UP	3.3	3.3	72	2400	73
QT8B1_0305S1.5UP	3.3	5	82	2400	73
QT8B1_0309S1.5UP	3.3	9	84	1000	73
QT8B1_0312S1.5UP	3.3	12	84	680	74
QT8B1_0315S1.5UP	3.3	15	84	330	77
QT8B1_1203S1.5UP	05	3.3	72	2400	73
QT8B1_1205S1.5UP	05	5	82	2400	73
QT8B1_1209S1.5UP	05	9	84	1000	73
QT8B1_1212S1.5UP	05	12	84	680	74
QT8B1_1215S1.5UP	05	15	84	330	77
QT8B1_0903S1.5UP	09	3.3	72	2400	73
QT8B1_0905S1.5UP	09	5	82	2400	73
QT8B1_0909S1.5UP	09	9	84	1000	73
QT8B1_0912S1.5UP	09	12	84	680	74
QT8B1_0915S1.5UP	09	15	84	330	77
QT8B1_1203S1.5UP	12	3.3	72	2400	73
QT8B1_1205S1.5UP	12	5	82	2400	73
QT8B1_1209S1.5UP	12	9	84	1000	73
QT8B1_1212S1.5UP	12	12	84	680	74
QT8B1_1215S1.5UP	12	15	84	330	77
QT8B1_1503S1.5UP	15	3.3	72	2400	73
QT8B1_1505S1.5UP	15	5	82	2400	73
QT8B1_1509S1.5UP	15	9	84	1000	73
QT8B1_1512S1.5UP	15	12	84	680	74
QT8B1_1515S1.5UP	15	15	84	330	77
QT8B1_2403S1.5UP	24	3.3	72	2400	73
QT8B1_2405S1.5UP	24	5	82	2400	73
QT8B1_2409S1.5UP	24	9	84	1000	73
QT8B1_2412S1.5UP	24	12	84	680	74
QT8B1_2415S1.5UP	24	15	84	330	77

Typical characteristics

Temperature derating graph



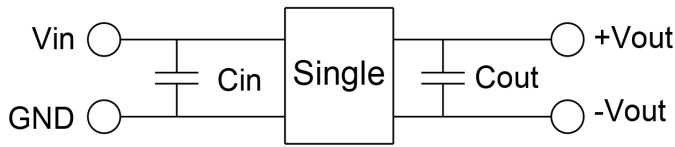
Tolerance envelope graph



QT8B1_1.5UP series

0.25W - Single Output DC-DC Converter - Fixed Input - Isolated & Unregulated

Recommended Test Circuit



Vin	Cin	Single Vout	Cout
3.3Vdc	4.7μF/25V	3.3VDC	10μF/16V
5Vdc	4.7μF/25V	5VDC	10μF/16V
9Vdc	4.7μF/25V	9VDC	2.2μF/25V
12Vdc	2.2μF/25V	12VDC	2.2μF/25V
15Vdc	2.2μF/25V	15VDC	1μF/25V
24Vdc	1μF/50V	24VDC	1μF/50V

EMC typical recommended circuit

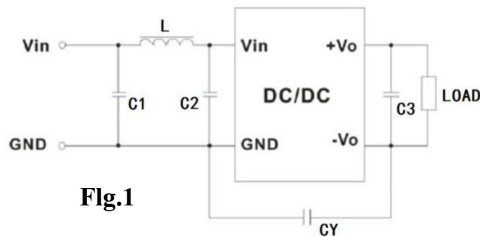
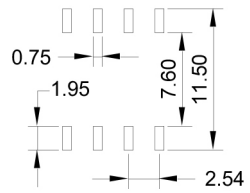
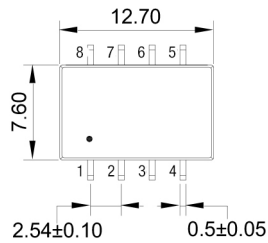


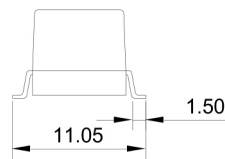
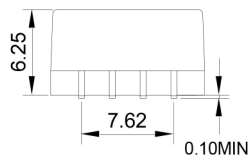
Fig.1

EMC recommended circuit value table		
EMI	C1	4.7μF/50V
	C2	4.7μF/50V
	CY	1nF/4kV
	C3	Recommended Test Circuit
	L	6.8μH

Mechanical dimensions



SUGGESTED PAD LAYOUT



Vin	Cin
1	-Vin
2	+Vin
3	-Vout
4	+Vout
8	NC
Other	NC

Unit:mm Unless otherwise specified, all tolerances are ±0.25